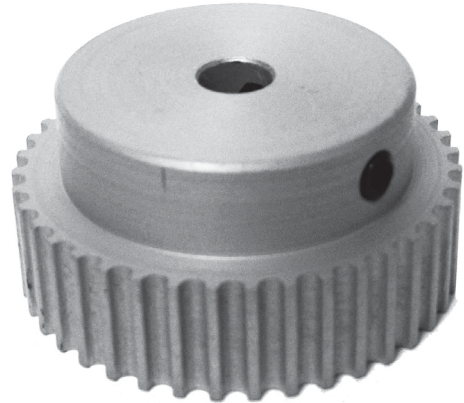


POWERHOUSE™ HTD® TIMING PULLEYS

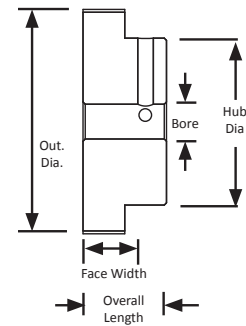
3 mm Pitch
For 6 mm Wide Belts
Hub
Aluminum
Clear Anodized
Metric Finished Bore

METRIC TIMING PULLEY



Part Number	No. of Teeth	Type	Pitch Dia. (mm)	Out. Dia. (mm)	Bore (mm)	Face Width (mm)	Overall Length (mm)	Hub Dia. (mm)	Set Screw
18-3M06M6A6	18	6	17.2	16.4	6.0	9.8	17.5	11.2	2 x M3 @ 90°
19-3M06M6A6	19	6	18.2	17.4	6.0	9.8	17.5	11.9	2 x M3 @ 90°
20-3M06M6A6	20	6	19.1	18.3	6.0	9.8	17.5	12.7	2 x M3 @ 90°
22-3M06M6A6	22	6	21.0	20.2	6.0	9.8	17.5	14.3	2 x M4 @ 90°
24-3M06M6A6	24	6	22.9	21.1	6.0	9.8	17.5	15.9	2 x M4 @ 90°
25-3M06M6A6	25	6	23.9	23.1	6.0	9.8	17.5	15.9	2 x M4 @ 90°
26-3M06M6A6	26	6	24.8	24.0	6.0	9.8	17.5	15.9	2 x M4 @ 90°
28-3M06M6A6	28	6	26.8	26.0	6.0	9.8	17.5	17.8	2 x M4 @ 90°
30-3M06M6A6	30	6	28.7	27.9	6.0	9.8	17.5	19.7	2 x M4 @ 90°
32-3M06M6A6	32	6	30.6	29.8	6.0	9.8	17.5	21.6	2 x M4 @ 90°
34-3M06M6A6	34	6	32.5	31.7	6.0	10.3	18.3	23.4	2 x M4 @ 90°
36-3M06M6A6	36	6	34.4	33.6	6.0	10.3	18.3	25.4	2 x M4 @ 90°
38-3M06M6A6	38	6	36.3	35.5	6.0	10.3	18.3	27.3	2 x M4 @ 90°
40-3M06M6A6	40	6	38.2	37.4	6.0	10.3	18.3	29.2	2 x M4 @ 90°
44-3M06M6A6	44	6	42.0	41.2	6.0	10.3	18.3	33.0	2 x M4 @ 90°
48-3M06M6A8	48	6	45.8	45.0	8.0	10.3	18.6	31.8	2 x M4 @ 90°
50-3M06M6A8	50	6	47.8	47.0	8.0	10.3	18.6	31.8	2 x M4 @ 90°
56-3M06M6A8	56	6	53.5	52.7	8.0	10.3	18.6	31.8	2 x M4 @ 90°
60-3M06M6A8	60	6	57.3	56.5	8.0	10.3	18.6	31.8	2 x M4 @ 90°
62-3M06M6A8	62	6	59.2	58.4	8.0	10.3	18.6	31.8	2 x M4 @ 90°
72-3M06M6A8	72	6	68.8	68.0	8.0	10.3	18.6	31.8	2 x M4 @ 90°

TYPE 6



Do you need multiple delivery dates throughout the year? Contact our sales engineers to discuss blanket order options to take advantage of quantity discounts.

Blanket orders:

- Satisfy recurring requirements
- Save time and reduce administrative costs by eliminating repetitive purchase orders
- Permit purchasing to leverage buying power through volume purchasing
- Reduce procurement lead time, especially for parts not commonly held in stock

Blanket orders save you from having to hold greater than necessary amounts of stock, save you the trouble and expense of processing frequent purchase orders, and reduce the lead time required for recurring orders.

The POWERHOUSE™ HTD® pitch is a curvilinear trapezoidal pitch which is based on the metric system of measurement and are interchangeable with the HTD® pitch offered by competitors. The POWERHOUSE™ HTD® tooth profile was designed for high torque and high speed applications. They also provide better tracking and less backlash than trapezoidal pitches. POWERHOUSE™ HTD® pitch pulley part numbers can tell you a great deal about the pulley including the number of teeth, pitch in mm, belt width in mm, pulley configuration, appearance, material, and bore size.

For more information on part numbers and their meaning, see page 441.